

**Welcome**

**REVIVE**

**1-70**

**MORE LANES,  
SAFER TRAVEL**



**NextLevel  
ROADS**

# Project Overview

REVIVE

1-70

MORE LANES,  
SAFER TRAVEL



# PROJECT CORRIDOR



➤ **Revive I-70 will improve and expand I-70 in Wayne County.**

# PROJECT OVERVIEW



Revive I-70 will **improve and expand I-70** in Wayne County.



The project stretches from west of Cambridge City to the IN/OH state line.



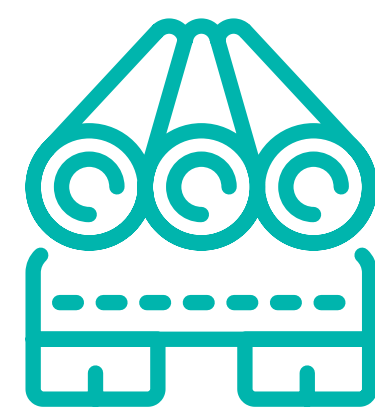
It will **reduce congestion, improve traffic flow and improve safety.**



It's expected to include **added travel lanes and bridge and interchange improvements.**



**Forty bridges** in the project area will be **widened and improved.**



**Pavement replacement and drainage improvements** are also expected.



# PURPOSE AND NEED

The purpose and need is the “**why**” for a project.

The Revive I-70 preliminary purpose and need is to:



**Restore the pavement** to extend the service life for at least 30 years;



**Correct geometric deficiencies** to meet current design standards and reduce the frequency of crashes; and,



**Alleviate congestion** and increase the mobility of people and goods along this section of I-70.



# Anticipated Improvements

REVIVE

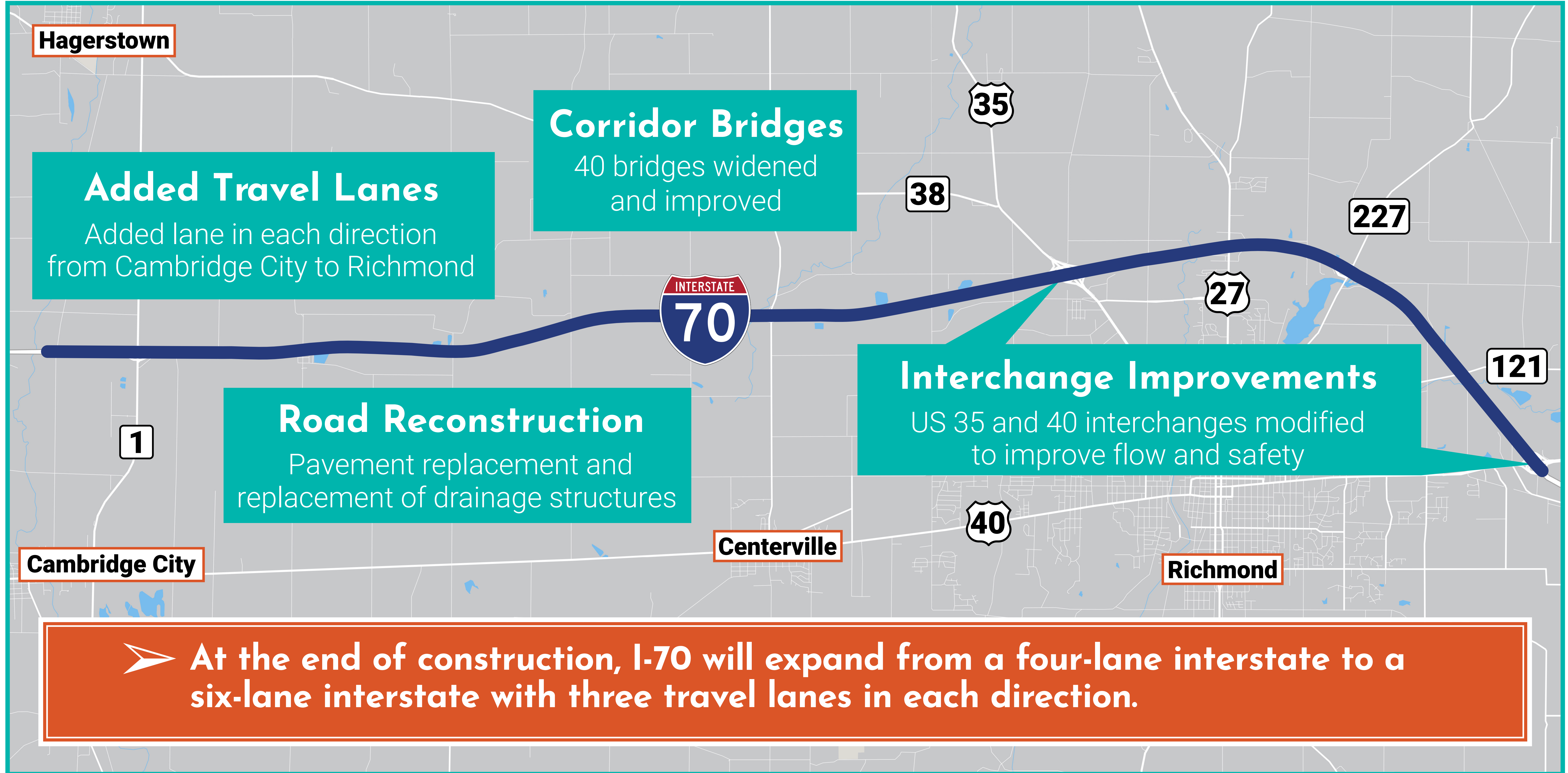
I-70

MORE LANES,  
SAFER TRAVEL



**NextLevel**  
ROADS

# ANTICIPATED IMPROVEMENTS



Hagerstown

**Added Travel Lanes**  
Added lane in each direction from Cambridge City to Richmond

**Corridor Bridges**  
40 bridges widened and improved

**Road Reconstruction**  
Pavement replacement and replacement of drainage structures

**Interchange Improvements**  
US 35 and 40 interchanges modified to improve flow and safety

➤ At the end of construction, I-70 will expand from a four-lane interstate to a six-lane interstate with three travel lanes in each direction.



## ADDITIONAL DETAILS

// Improvements are expected at two interchanges to improve safety and mobility:

➤ I-70 and US 40 interchange

➤ I-70 and US 35/Williamsburg Pike interchange

// Bridge improvements are expected to include complete replacements, deck replacements, deck overlays and painting.

// Existing lighting, signage and guardrail/barrier systems will be upgraded.

// Widening will happen mostly to the inside, utilizing the grass median.

// Most of the work will occur in the existing right-of-way.

// At least two lanes will be open in each direction during peak travel times during construction.



# Next Steps

REVIVE

I-70

MORE LANES,  
SAFER TRAVEL

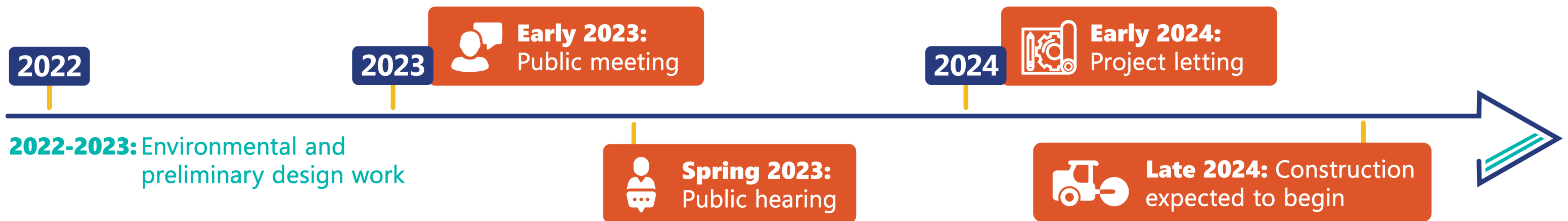


**NextLevel**  
ROADS



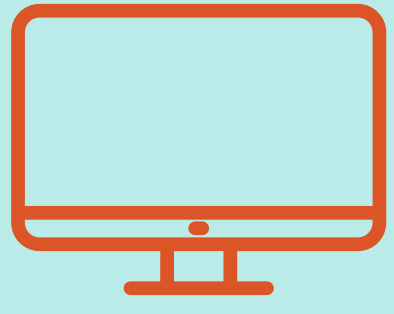
# WHAT TO EXPECT

- // Environmental analysis and design work are underway.
- // The draft environmental document is expected in spring 2023.
- // A public hearing and formal comment period will be held.
- // Construction is expected to begin in late 2024.
- // Construction duration will depend on phasing and future funding.





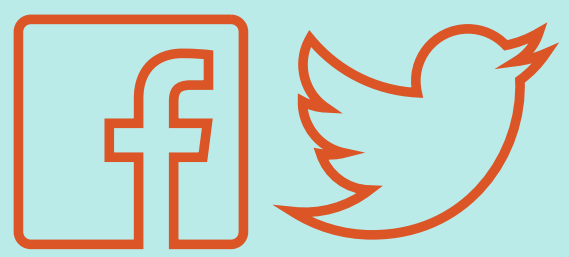
## FOLLOW OUR PROGRESS



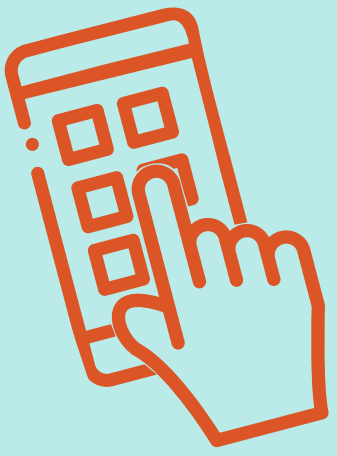
**ReviveI70.com**



Sign up for email updates at **Revive I-70.com**.



**Revive I70**



Text “**INDOT ReviveI70**” to **468311** for text updates.

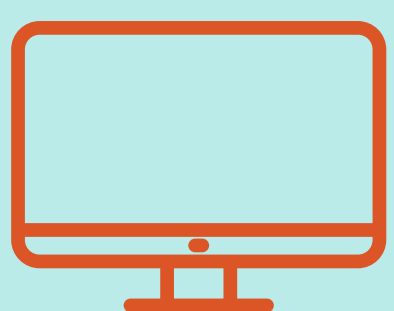
## CONTACT US



**855-INDOT4U**  
**(855-463-6848)**



**INDOT@indot.in.gov**



**INDOT4U.com**

Scan to visit our  
project website

