

# REVIVE

# I-70

**MORE LANES,  
SAFER TRAVEL**



# DBE CONNECT

February 13, 2024

Contract No: R-43375-A

# // PRESENTERS



**Danny Corbin**  
Project Manager, INDOT



**Toby Randolph**  
Project Manager, Parsons



# // AGENDA

1. Project Overview
2. Project Delivery
3. Anticipated Improvements
4. DBE Activities



# REVIVE I-70

MORE LANES,  
SAFER TRAVEL

# PROJECT OVERVIEW



# // PROJECT AREA



# // PROJECT OVERVIEW

- Added travel lanes, bridge improvements and interchange improvements are expected.
- Improvements are planned for 41 bridges in the project area.
- Pavement replacement and drainage improvements are expected.
- Existing lighting, signage, guardrail and barriers will be updated.



# // PROJECT TIMELINE

**REVIVE I-70**  
MORE LANES, SAFER TRAVEL



# REVIVE I-70

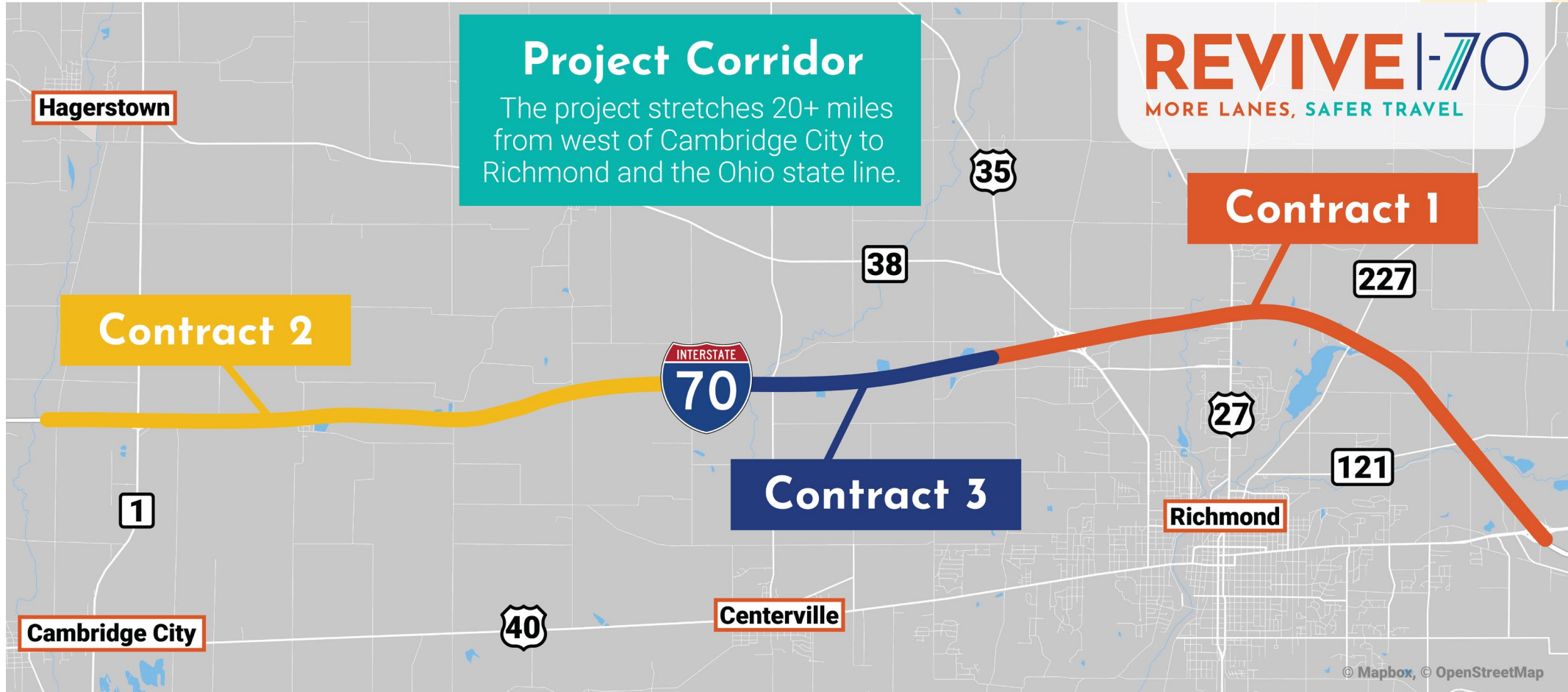
MORE LANES,  
SAFER TRAVEL

# PROJECT DELIVERY





# // PROJECT DELIVERY



# // PROJECT DELIVERY

## Contract 1



- Eastern portion of the project area • Extends from west of US 35 to the Ohio state line • About eight miles long
- Expected to let in early 2024 • Construction expected to begin by late 2024
- Added travel lanes, interchange modifications and pavement replacement

## Contract 2



- Western portion of the project area
- Extends from west of SR 1 to west of Centerville
- Nearly nine miles long
- Expected to let in fall 2024

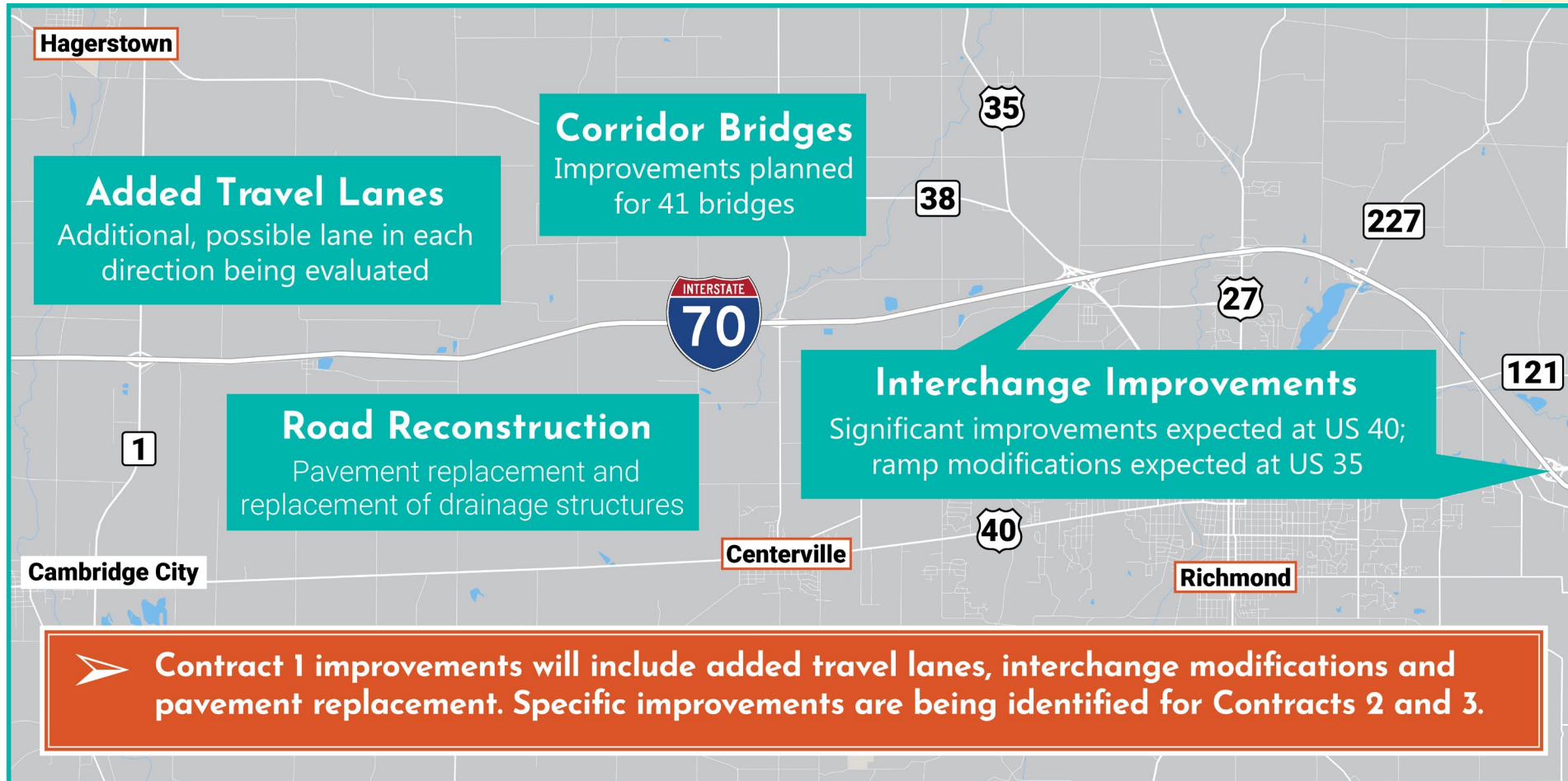
## Contract 3



- Center portion of the project area
- Extends from west of Centerville to US 35
- Nearly four miles long
- Expected to let in 2026 or 2027



# // ANTICIPATED IMPROVEMENTS



# REVIVE I-70

MORE LANES,  
SAFER TRAVEL

# CONTRACT ONE IMPROVEMENTS



# // CONTRACT 1 INFORMATION

- Will include added travel lane in each direction
- Will include pavement replacement for the full corridor
- Special letting scheduled for March 27, 2024
- Construction expected to begin in late 2024
- Open to traffic late 2027; construction end date 2028



# // CONTRACT 1 BRIDGES

- 4 bridges removed & replaced
- 4 bridges removed & replaced with box structures
- 10 bridges widened & rehabilitated
- 3 bridges painted & preventative maintenance
- 41,000+ square feet of new bridge deck
- 114,000+ square feet of bridge widening and rehabs



# // CONTRACT 1 ROADWAY

- 585,000+ square yards of new pavement
- 400,000+ cubic yards of excavation
- 350,000+ tons of aggregates on grade
- 35,000+ square feet of retaining wall
- 31,000+ feet of new drainage structures
- New interchange with roundabouts at US 40
- Interchange modifications at US 35



# REVIVE I-70

MORE LANES,  
SAFER TRAVEL

# DBE INFORMATION





# // POTENTIAL DBE ACTIVITIES

Contract 1 DBE Goal: 7%



Engineering



Construction  
Engineering



Construction  
Survey



Excavation



Grading



Drainage



Pavement



Bridge



Electric



ITS



Signing



Pavement  
Markings



Guardrails



Landscape



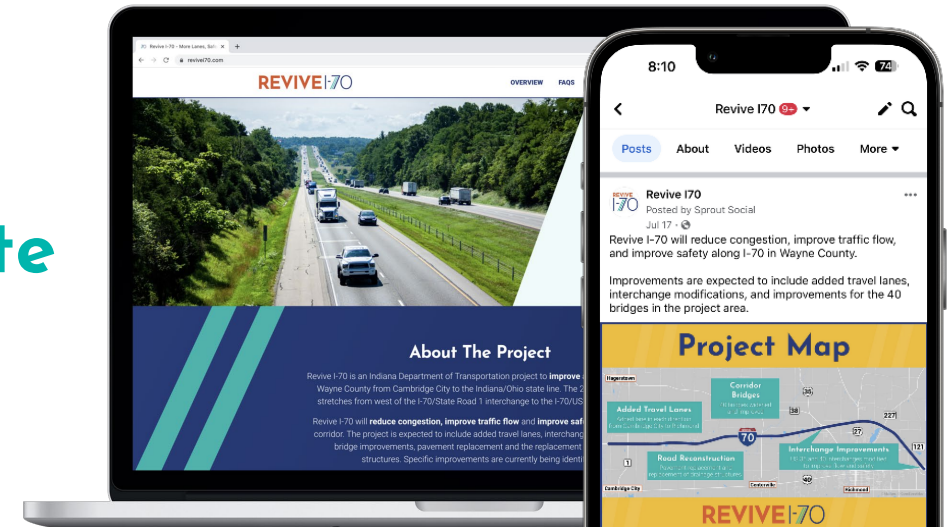
# // DBE Connect Event

- Presentations from Design-Build Teams
- Presentation from INDOT DBE Supportive Services
- DBE Firm introductions
- Networking
  - Visit tables
  - Pick up contact information



# // PROJECT INFORMATION

- **ReviveI70.com**
- Text “**INDOT REVIVEI70**” to **468311**
- Sign up for **email updates** on **website**
- Social Media
  - **Facebook:** Revive I-70
  - **Twitter:** @ReviveI70



**REVIVE**

**I-70**

**MORE LANES,  
SAFER TRAVEL**

**THANK  
YOU**







**Making Lives Better One  
Road and Bridge at a Time**



**Safety  
Quality  
Performance  
Production  
Profit**

**Trust**

**Respect**

**Commitment**

**Passion**





# E&B PAVING

Trusted for **safely building high-quality** custom work.

Our 5 Fundamentals: Safety, Quality, Custom Solutions, Sustainability & Long-Term Relationships



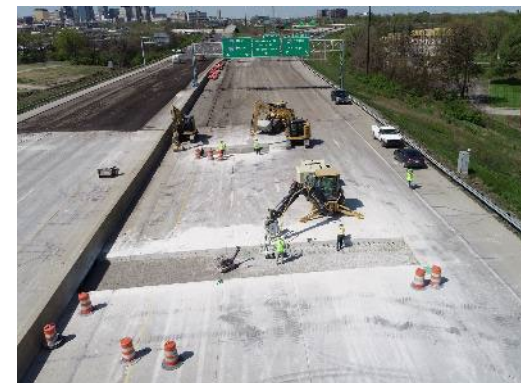


# Key Services

- Road Construction
- Road Repair & Maintenance
- Asphalt Paving
- Concrete Paving
- Bridge Construction
- Excavation & Utilities
- Site Development
- Contracting
- Engineering

# Key Markets

- Asphalt Paving
- Concrete Paving
- Bridge Construction
- Excavation & Utilities







# E&B PAVING

## Key Services

- Road Construction
- Road Repair & Maintenance
- Asphalt Paving
- Concrete Paving
- Bridge Construction
- Commercial Site Development
- Industrial Site Development
- Contracting Services
- Engineering

## Key Markets

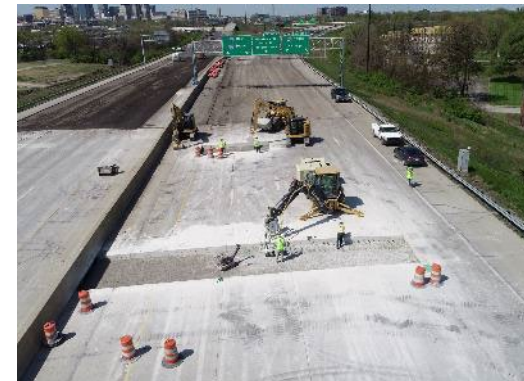
- Asphalt Paving
- Concrete Paving
- Bridge Construction
- Grade & Drain Work
- Concrete Curbs
- Concrete Sidewalks





## Current Projects

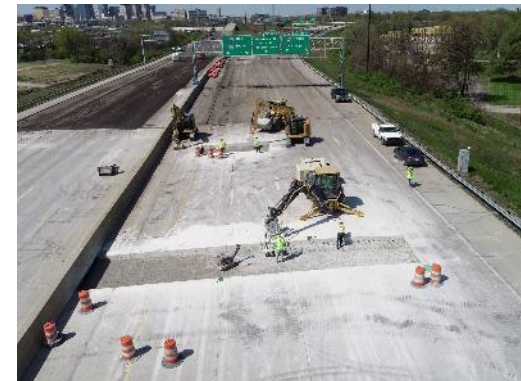
- R-39825-A So. 9<sup>th</sup> St.  
Richmond
- R-41504-A US40  
Reconstruct in Lewisville
- R-41309-A Bike Path  
Downtown Richmond
- Blue Buffalo Richmond
- Anchor Ingredients  
Richmond





## DBE Subcontract Opportunities

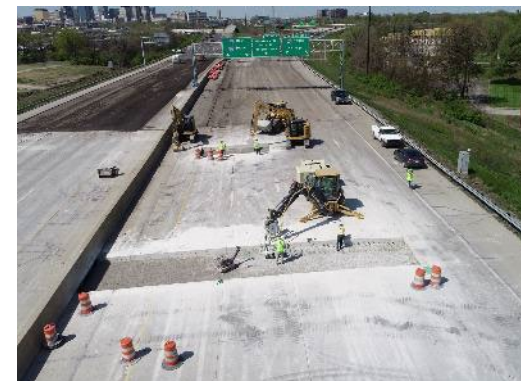
- Excavation, Demolition
- Construction Layout
- Drainage/Erosion Control
- Hauling
- Construction Signage
- Striping
- Bridge Painting/Sealing
- Pavement Milling
- Landscaping
- Steel Erection
- Fence/Guardrail
- Misc. Concrete
- Testing Services





## DBE Supplier Opportunities

- Precast Concrete Culverts
- Precast Concrete Inlets/Manholes
- MSE Wall/Retaining Wall
- Castings
- Drainage Pipe
- Geotextiles
- Erosion Control
- Electrical Supplies
- Lumber/Formwork
- Rebar/Structural Steel
- Misc. Supplies





# DBE Connect Event

REVIVE I-70

**WALSH // CRIDER**  
DESIGN-BUILD TEAM

**WALSH**



AMERICAN  
**STRUCTUREPOINT**  
INC.

# Current Projects

- I-69 Section 6 Contract 5 | Walsh/Milestone JV | Indianapolis, IN
- ORX Section 3 B-44119-A | ORX Constructors (Walsh/Traylor Bros JV) | Evansville, IN
- Brent Spence Bridge Corridor | Walsh Kokosing JV | Cincinnati, OH
- Western Hills Viaduct | Walsh Kokosing JV | Cincinnati, OH
- Karst Farm Bike Path | Crider and Crider | Monroe County, IN



# We get results putting DBEs to work

Project	Goal	Achieved
NICTD Double Track Northwest Indiana   \$375M   Walsh	12.46%	14.31% (forecasted)
LSIORB Downtown Crossing DB Louisville, KY   \$894M   Walsh	8%	9%
LSIORB East End Crossing P3 Utica, IN   \$763M   Walsh	9%	10%
I-69 ATL and Maintenance DB Anderson, IN   \$79M   Walsh	12%	17.51%
US 50 Roadway Rehabilitation Dillsboro, IN   \$23M   Walsh	9%	12.69%
I-69 Section 6.4 Morgan & Johnson Counties, IN   \$345.74M   Crider & Rieth	9.0%	9.1%
I-69 Section 6.3 Frontage Road Morgan & Johnson Counties, IN   \$61.3M   Crider & Crider	12.0%	12.02%
US 31 and 276th Street Hamilton County, IN   \$36.15M   Crider & Rieth Riley JV	9.0%	9.01%
Bedford Plaza Drive Lawrence County, IN   \$3.26M   Crider & Crider	14.0%	14.85%



# Potential DBE Bid Opportunities

- Asphalt milling
- Concrete cutting/sawing
- Dewatering
- Drainage
- Earthwork/sitework
- Electrical & ITS supply
- Equipment supply
- Erosion control
- Fencing
- Girder erection
- Guardrail
- Hoisting
- Landscaping
- Material supply
- MOT/striping
- Painting/coatings/waterproofing
- Pavement grinding/grooving
- Rebar install/supply
- Retaining walls
- Rip Rap armoring
- Roadway barrier wall
- Signage install/supply
- Stay-in place bridge decking
- Trucking
- Quality control/environmental testing

# Steps to Stay Involved

- Complete Subcontractor Expression of Interest
- Complete Non-Disclosure Agreement
- Email both to [lsnyder@walshgroup.com](mailto:lsnyder@walshgroup.com)
- Forms available at team table

**LET'S WORK TOGETHER**  
Fill out the form below and e-mail to Lori Snyder:  
[lsnyder@walshgroup.com](mailto:lsnyder@walshgroup.com)

**WALSH // CRIDER**  
DESIGN-BUILD TEAM

**SUBCONTRACTOR EXPRESSION OF INTEREST**

Please provide contact information:

FIRM NAME \_\_\_\_\_

CONTACT NAME \_\_\_\_\_

STREET ADDRESS \_\_\_\_\_

CITY \_\_\_\_\_ STATE \_\_\_\_\_ ZIP \_\_\_\_\_

OFFICE PHONE \_\_\_\_\_ FAX \_\_\_\_\_

EMAIL \_\_\_\_\_

What scope of services does your firm provide? (check as applicable)

<input type="checkbox"/> Aggregate Supply	<input type="checkbox"/> Earthwork	<input type="checkbox"/> Formwork	<input type="checkbox"/> Signage
<input type="checkbox"/> Asphalt Paving	<input type="checkbox"/> Electrical	<input type="checkbox"/> Landscaping	<input type="checkbox"/> Site Clearing
<input type="checkbox"/> Concrete Paving	<input type="checkbox"/> Excavation	<input type="checkbox"/> Painting	<input type="checkbox"/> Trucking
<input type="checkbox"/> Demolition	<input type="checkbox"/> Fencing	<input type="checkbox"/> Rebar	<input type="checkbox"/> Structural Work
<input type="checkbox"/> Drainage	<input type="checkbox"/> Flatwork Concrete	<input type="checkbox"/> Retaining Walls	<input type="checkbox"/> Utility Services
<input type="checkbox"/> Other: _____			

Tell us about your DBE and Prequalification status:

<b>Is your firm currently certified as a DBE with KYTC or INDOT? (check one)</b>	<b>Is your firm currently listed on the INDOT Prequalified Contractor List? (check one)</b>
<input type="checkbox"/> Yes, DBE certified with _____ (list KYTC and/or INDOT)	<input type="checkbox"/> Yes, in _____ (list work classification(s))
<input type="checkbox"/> No	<input type="checkbox"/> No
<input type="checkbox"/> Not currently, but working to submit DBE application to KYTC or INDOT for approval	<input type="checkbox"/> Not currently, but working to submit qualifications to INDOT for approval

**Subcontractor Workforce Composition:**

<b>Does your firm belong to a labor union? (check one)</b> <i>This is a prevailing wage project and David Bacon regulations will apply.</i>	<b>If non-union, will the subcontractor be open to a project specific agreement with the union? (check one)</b>
<input type="checkbox"/> Yes	<input type="checkbox"/> Yes
<input type="checkbox"/> No	<input type="checkbox"/> No
	<input type="checkbox"/> Does not apply

Comments?  
\_\_\_\_\_  
\_\_\_\_\_

WALSH / CRIDER DESIGN-BUILD TEAM  
1260 E Summit Street, Crown Point, Indiana 46307 // P: 219.661.2450, F: 219.661.2460  
An Equal Opportunity Employer, Disability/Veteran

# Contacts

Marc Arena, Senior Project Manager  
marena@walshgroup.com

Brian Waltz, Chief Estimator  
bwaltz@criderandcrider.com

Lori Snyder, DBE Manager  
lsnyder@walshgroup.com

# DBE Connect Event

REVIVE I-70

**WALSH // CRIDER**  
DESIGN-BUILD TEAM

**WALSH**



AMERICAN  
**STRUCTUREPOINT**  
INC.

# **INDOT DBE Supportive Services**

**Presented By: Derrick Casson and Zola Lamothe**

# Revive I-70 DBE Goal

---

**7% DBE**

## Goal

- 3-Yr Statewide DBE (2023- 2025) is 10.2%

# Possible DBE Activities

---

- Clearing and grubbing
- Concrete supply
- Drilled shaft foundations
- Environmental monitoring
- Erosion control
- Excavation
- Formwork
- Geotechnical explorations
- Hauling
- Pile driving
- Public involvement
- Rebar
- Site security
- Surveying
- Traffic control

# Equity Initiative Services At INDOT

Mission: We strive to provide opportunities to underrepresented people and businesses through education, certification and workforce development.

## Divisions Include

- Disadvantaged Business Enterprise (DBE) certification
- Supportive Services for the DBE community
- External Workforce Programming
- Inclusion and Belonging



# DBE / ACDBE Certification

---

The Disadvantaged Business Enterprise (DBE) program ensures the qualification of minority, women or other disadvantaged-owned and operated businesses for participation on USDOT funded contracts. DBEs must also be a small business according to SBA standards

INDOT's Equity Initiative Services Division is the sole DBE/ACDBE certifier in the State of Indiana.

The initial Application and all Application maintenance is handled electronically.



# How we empower DBEs

---

Education

Resources

Support

# Education

Equity Initiative Services works with our vendor Construction Estimating Institute (CEI) to offer a variety of free learning opportunities



HELP TO BUILD YOUR BUSINESS


**Ready to Take Your Business to the Next Level?**

The Business Development Program will teach DBEs advanced skills needed to develop and scale their business. DBEs will receive instruction and assistance, in both group virtual classes as well as one-on-one, to help prepare them for work opportunities.



*Details on this free virtual training can be found below.*

<b>Business Development Program</b>	<b>Topics Covered Include:</b>
<b>Eight Session Program</b>	<ul style="list-style-type: none"><li>• Finding work</li><li>• Marketing</li><li>• Financing &amp; Bonding</li><li>• Capacity</li><li>• Estimating &amp; Negotiating</li><li>• Business &amp; Marketing Plans</li><li>• INDOT Opportunities</li></ul>
January 30th	
February 1st, 6th, 13th, 15th, 20th, 22nd, & 27th	
2:00 PM to 4:00 PM EST	



INDOT ONE SUPPORTIVE SERVICES PRESENTS

**Get the Tools You Need to Grow Your Business**

Power Session webinars are designed to educate and empower you in **30 minutes or less**. These webinars are offered twice per month. A quick, in-depth discussion that will help you move your business forward.

*Details on the next session in this series below.*

<b>Overhead Recovery</b>	<b>This Webinar Will Discuss:</b>
Friday, January 19, 2024 11:30am EST	<ul style="list-style-type: none"><li>• Use of Historical Data</li><li>• Your Bid &amp; What It Helps With</li><li>• What Direct Costs Include</li></ul>

[Register Now](#)

## Educational Opportunities

- Online 30 min power sessions
- Business development program
- Serve as an informational conduit to assist DBEs and others as it relates to the program

# Resources

Supportive Services strives to offer tools to help DBEs in several different forms

## Completing Your No Change Affidavit

### 1 Getting Started

Log into ITAP <http://tap.indot.in.gov>. This will take you to your Access Indiana login.

### 2 Launch Your Certification

Click the "Launch" button after "DBE and ACDBE Certification".



### 3 Access Your Application

On the center right of the screen "Click here to access application" will appear. Select that link and you will be taken to your Home Screen.



## Bid INDOT Projects

Click on a work category below to view current lettings available for bid.

For instructions on how to navigate the bidding opportunities, click the button below.

[VIEW INSTRUCTIONS](#)

## Resources Offered

- Creating instructional guides
- Maintain and update the DBE website
- New bid matching system
- New Hauler orientation video
- New DBE seal available for marketing



# Support

Unsurprisingly the overall goal of the Supportive services team is to support the DBE community. The best way we can do this by working to remove barriers for DBEs.



## Support examples

- Partnering with FAA and FTA sister agencies to meet their DBE needs and maximize DBE contracting opportunities
- Maintaining an awareness of ongoing projects for EIS staff and DBE firms so we can all maximize contracting opportunities for DBEs
- Providing 1 on 1 support for business owners navigating the online application system

**Thank You!**